

ALLARME
INCENDIO

Wood coverings

**ACOUSTIK
PLUS
COVERING
500 - 501 - 502**

 **CBI**
EUROPE
HI-TECH INTERIORS

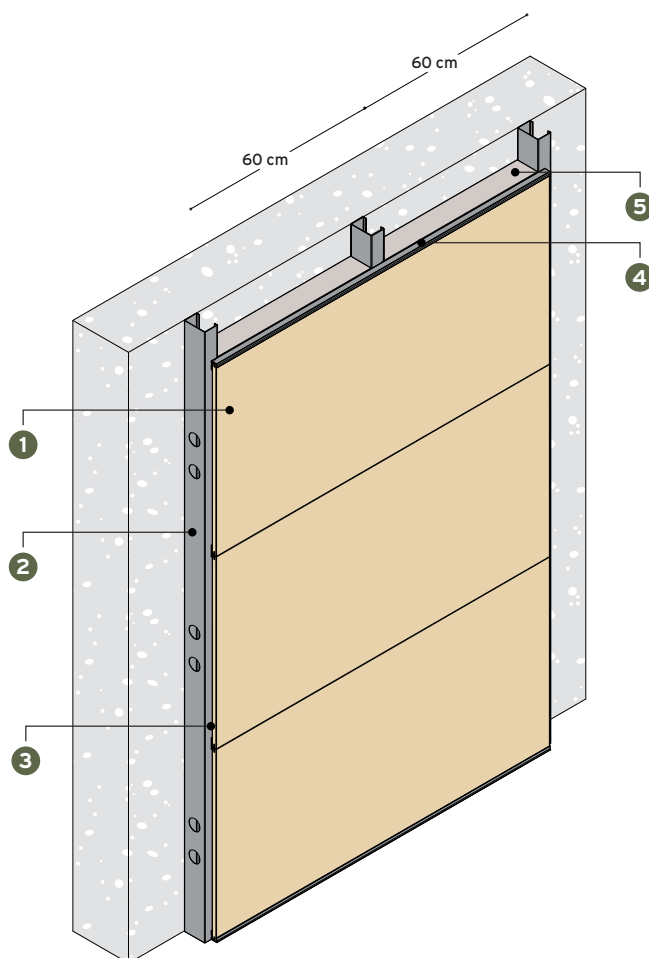
WOOD COVERING 500 SYSTEM



EASY INSPECT



CUSTOM SIZE



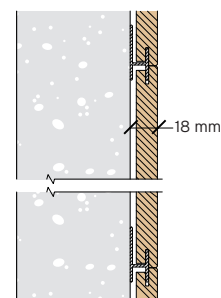
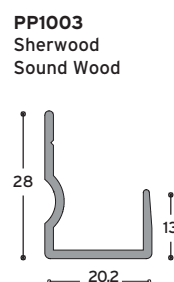
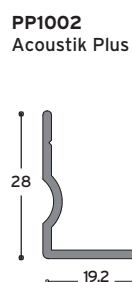
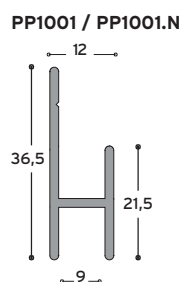
PANEL PANNELLO

dimension type
 square quadrato . ACOUSTIK PLUS
 rectangular rettangolare

custom su misura

GRID SYSTEM STRUTTURA

· WC1



1

2

3

4

5

panel pannello	M46 / 75	primary support structure struttura di sostegno primaria	PP1001 Acoustik Plus Sherwood PP1001.N Sound Wood	secondary profile profilo secondario	PP1002 Acoustik Plus PP1003 Sherwood Sound Wood	starting profile profilo di partenza	PPN1 / 40.1 rockwool insulation lana di roccia 600 x 1200 mm
-------------------	-----------------	---	---	---	---	---	--

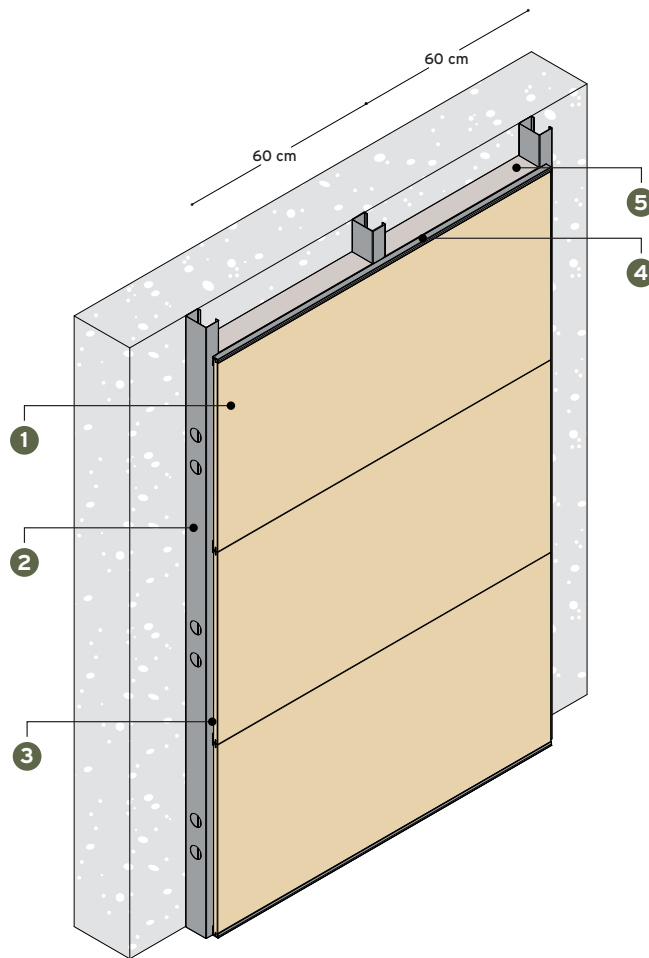
WOOD COVERING 501 SYSTEM



EASY INSPECT



CUSTOM SIZE



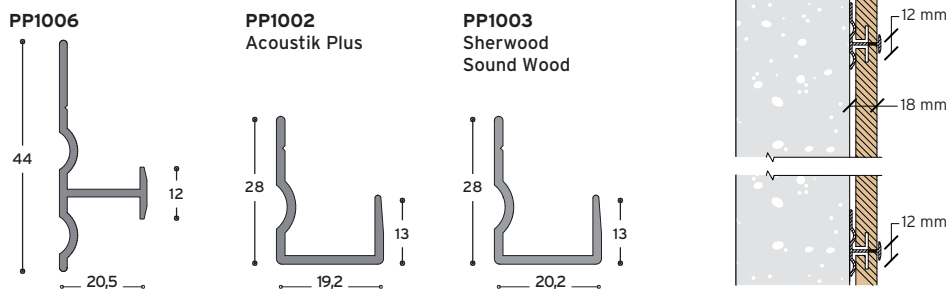
PANEL PANNELLO

dimension type
 square quadrato . ACOUSTIK PLUS
 rectangular rettangolare

custom su misura

GRID SYSTEM STRUTTURA

· WC6



1	2	3	4	5
panel pannello	M46 / 75 primary support structure struttura di sostegno primaria	PP1006 secondary profile profilo secondario	PP1002 Acoustik Plus PP1003 Sherwood Sound Wood	starting profile profilo di partenza PPN1 / 40.1 rockwool insulation lana di roccia 600 x 1200 mm

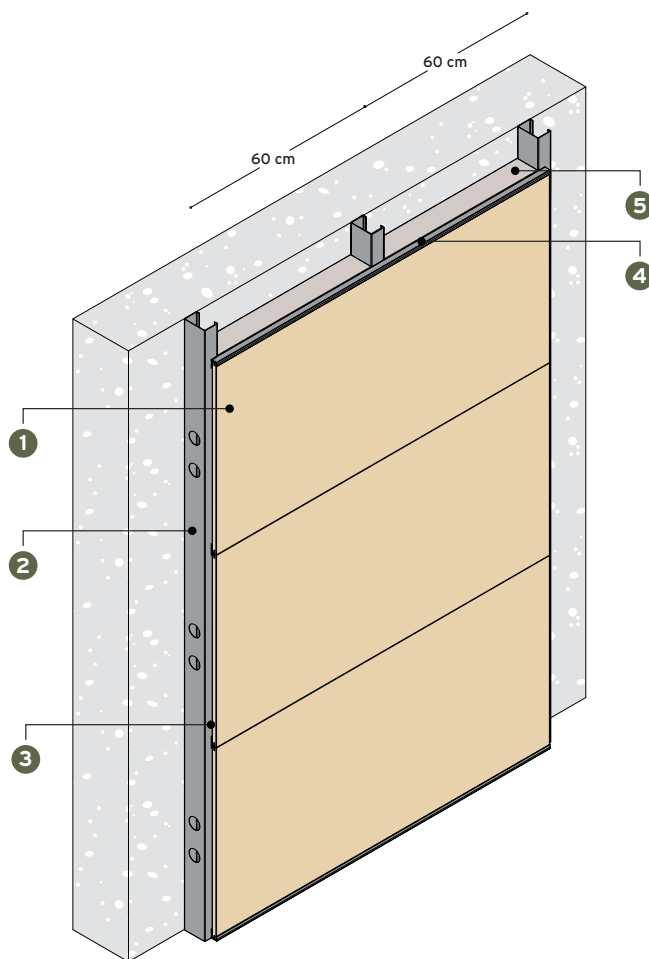
WOOD COVERING 502 SYSTEM



EASY INSPECT



CUSTOM SIZE



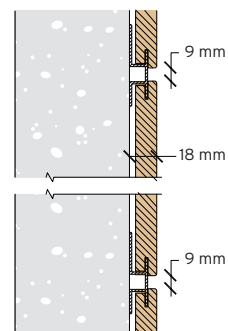
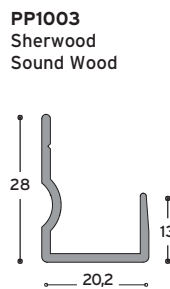
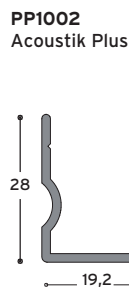
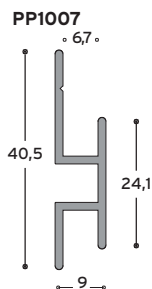
PANEL PANNELLO

dimension type
 square quadrato . ACOUSTIK PLUS
 rectangular rettangolare

custom su misura

GRID SYSTEM STRUTTURA

· WC7



1

2

3

4

5

panel
pannello

M46 / 75 primary support
structure
struttura di sostegno
primaria

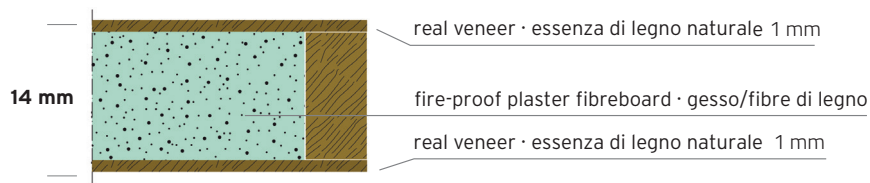
PP1007 secondary profile
profilo secondario

PP1002 starting profile
profilo di partenza
PP1003
Sherwood
Sound Wood

PPN1 / 40.1 rockwool insulation
lana di roccia
600 x 1200 mm

TYPE OF PANELS

ACOUSTIK PLUS · FIRE-PROOF PLASTER FIBREBOARD



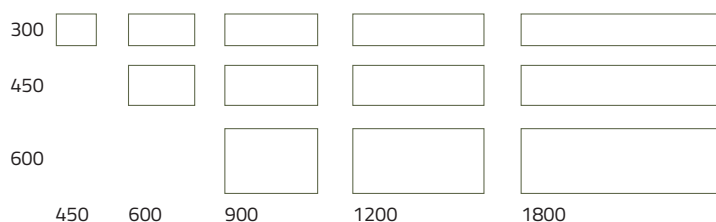
FIRE-PROOF PLASTER FIBREBOARD

Internal bond · Resistenza allo strappo	EN 319	0,35 / 1,1 N/mm ²
C.R.F.	EN 310	9 N/mm ²
M.O.E.	EN 310	4000 N/mm ²
Thickness swelling 24H (max) · Rigonfiamento 24H (max)	EN 317	0,08 %
Surface soundness · Strappo superficiale	EN 311	18 N/mm ²
Thickness Tolerance · Tolleranza di spessore	EN 324-1	+/- 0,5 mm
Lenght and width tolerance · Toll. lunghezza e larghezza	EN 324-1	+/- 0,3 mm
Squareness · Squadro	EN 324-2	+/- 0,3 mm
Moisture content · Umidità	EN 322	2%
Grit content · Contenuto in silice	ISO 3340	0
Formaldehyde · Formaldeide	EN 120	0
Fire reaction class · Classe di reazione al fuoco		A2 s₁ d₀

MODULARITY

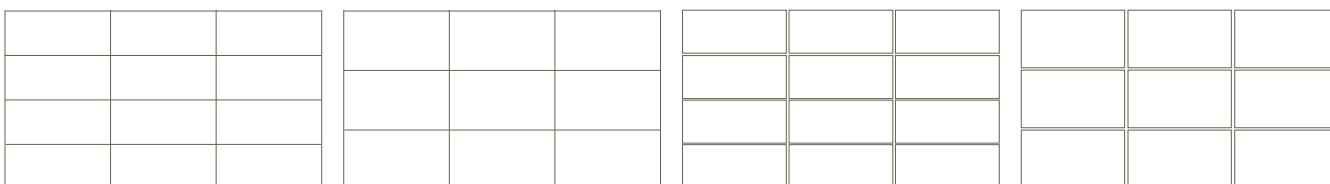
WALL CLADDINGS

ACOUSTIK PLUS



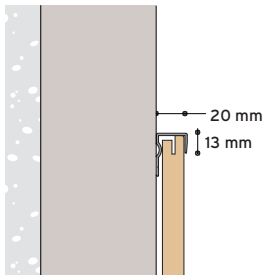
OTHER DIMENSION AVAILABLE ON REQUEST

sample compositions

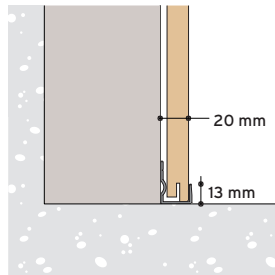


PERIMETRAL MOLDING

WOOD COVERING 500 / 501 / 502 SYSTEM



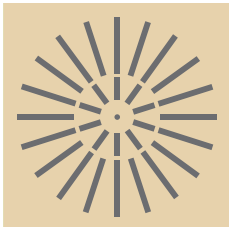
WC1 - WC2 - WC6 - WC7
PP1002 - PP1003



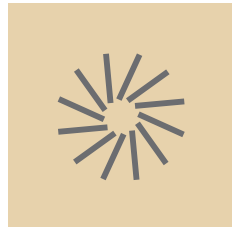
WC1 - WC2 - WC6 - WC7
PP1002 - PP1003

ACCESSORIES

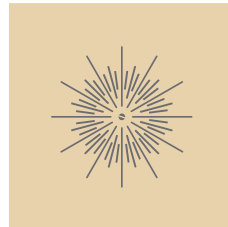
AIR VENTS



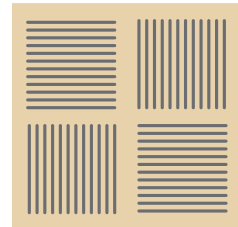
H05



H06



H07



H08

REMOVABLE MANHOLE



EASY INSPECT

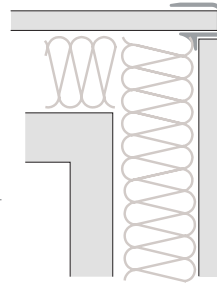
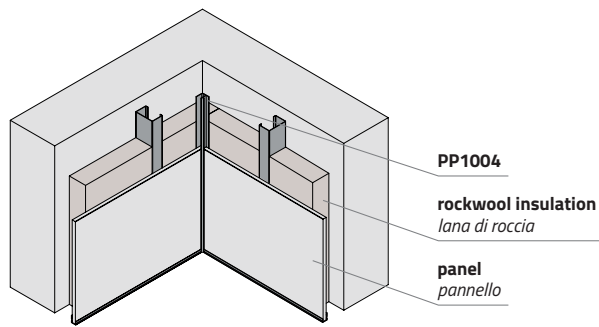
The manhole is manufactured by CBI Europe measures on request.

FITTINGS

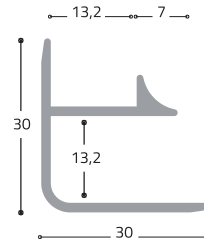
All Wood System panels permit the installation of fittings such as lighting, air nozzles, fume detectors, sprinklers and suspended signboards.

CORNERS ANGOLI

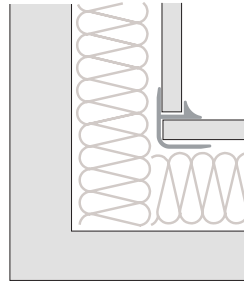
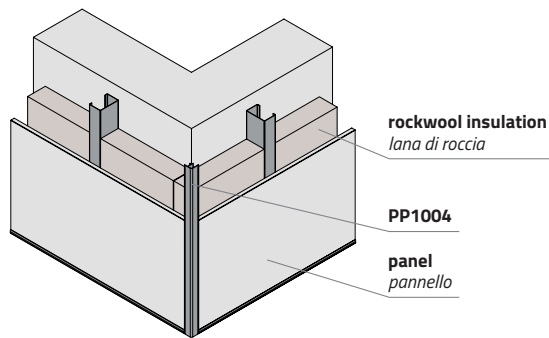
INTERNAL CORNER ANGOLO INTERNO



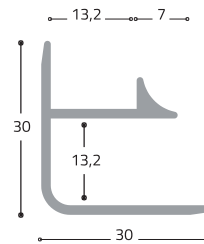
PP1004 ACOUSTIK PLUS



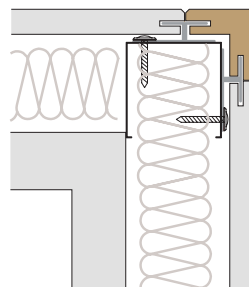
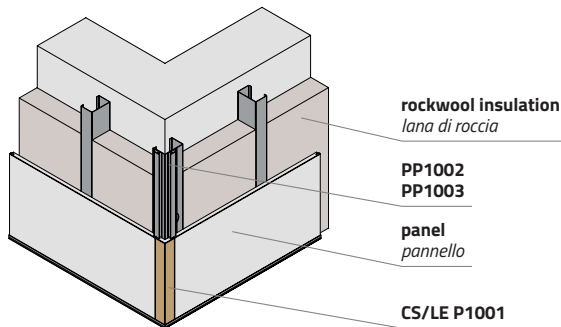
EXTERNAL CORNER ANGOLO ESTERNO



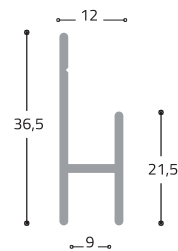
PP1004 ACOUSTIK PLUS



WOODEN CORNER ANGOLO IN LEGNO

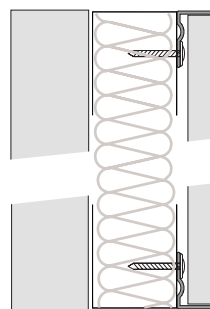
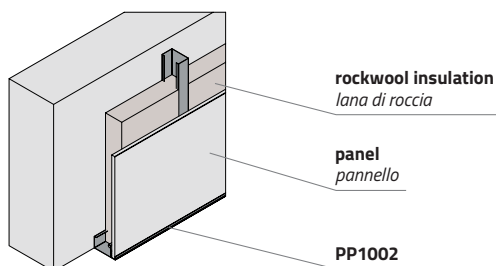


CS/LE P1001

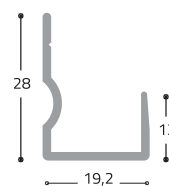


PROFILES PROFILI

LINEAR PROFILE PROFILO LINEARE



PP1002 ACOUSTIK PLUS



FINISHES

REAL VENEER

> ACOUSTIK PLUS



maple



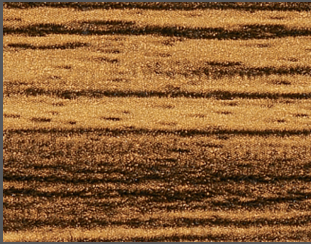
wengè



beech



cherry



zebrano



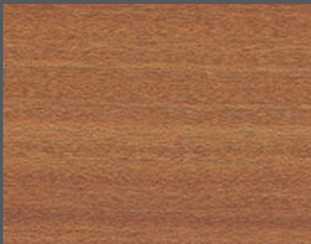
ash tree



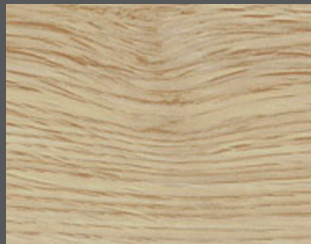
walnut 1



walnut 2



mahogany



oak

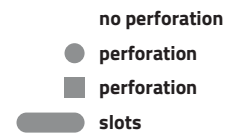
The colour card shown on this page is purely for information purposes; please request samples. Please contact CBI Europe's Technical Office for special colour re-

quirements which will be supplied only for orders of at least 800 sq.m. Wood system accessories are finished in aluminium or wood.

PERFORATION



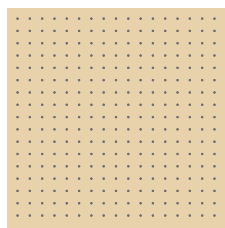
ACOUSTIC ABSORPTION



ABC = ACOUSTIK PLUS PANELS



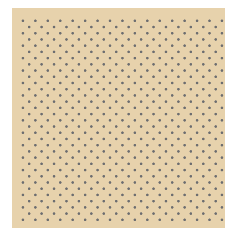
PRO



PR1

Ø 6 = 2.27 %
Ø 8 = 4.03 %

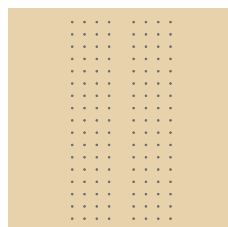
● : 289



PR2

Ø 6 = 4.28 %
Ø 8 = 7.61 %

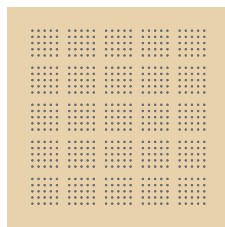
● : 545



PR6

Ø 6 = 1.07 %
Ø 8 = 1.90 %

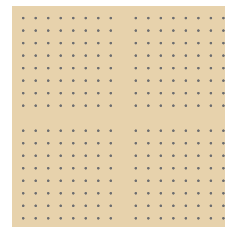
● : 136



PR3

Ø 6 = 4.28 %
Ø 8 = 7.61 %

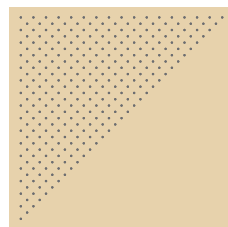
● : 545



PR4

Ø 6 = 2.01 %
Ø 8 = 3.57 %

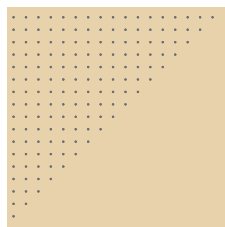
● : 256



PR8

Ø 6 = 1.20 %
Ø 8 = 2.14 %

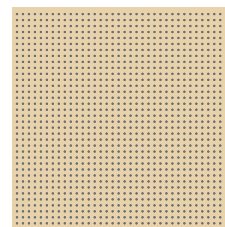
● : 153



PR7

Ø 6 = 2.27 %
Ø 8 = 4.03 %

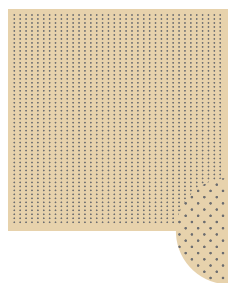
● : 289



PR5

Ø 6 = 10.17 %
Ø 8 = 18.09 %

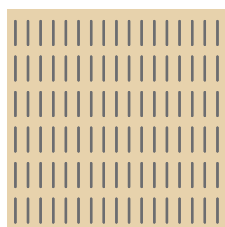
● : 1296



PR9

Ø 3 = 2.55 %

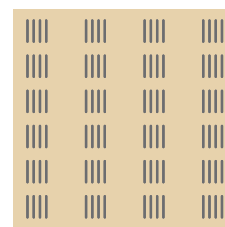
● : 1296



SL1

6x66 mm - 11.00 %
8x66 mm - 14.57 %

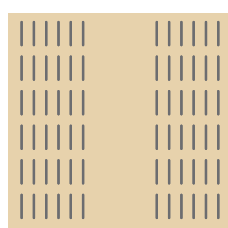
▬ : 102



SL2

6x60 mm - 9.39 %
8x60 mm - 12.43 %

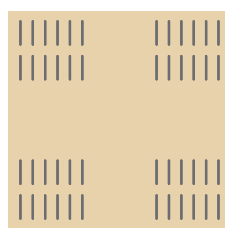
▬ : 96



SL5

6x66 mm - 10.35 %
8x66 mm - 13.71 %

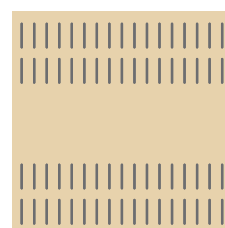
▬ : 96



SL6

6x66 mm - 5.18 %
8x66 mm - 6.86 %

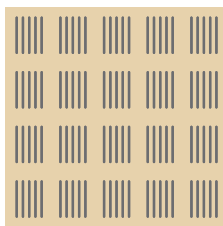
▬ : 48



SL7

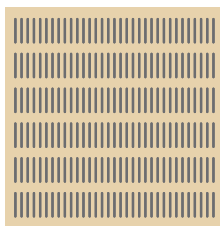
6x66 mm - 7.33 %
8x66 mm - 9.71 %

▬ : 68



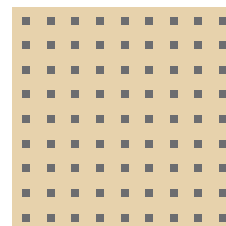
SL3
6x96 mm - 15.79 %
8x96 mm - 20.95 %

■ : 100



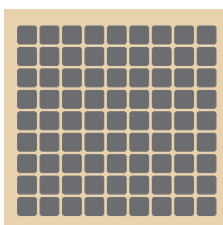
SL4
6x60 mm - 19.37 %
8x60 mm - 25.64 %

■ : 198



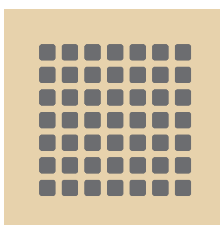
AD8
20x20 mm = 9.00 %

■ : 81



A09
50x50 mm =
56.25 %

■ : 100



A010
40x40 mm = 21.77 %

■ : 198



A11
spacing
larghezza 3 mm
depth
profondità 2 mm

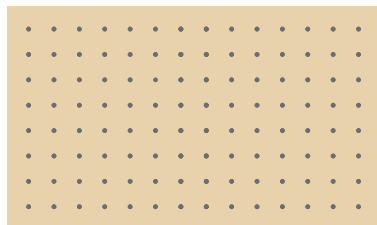
30 mm

ABC = ACOUSTIK PLUS STRIPS



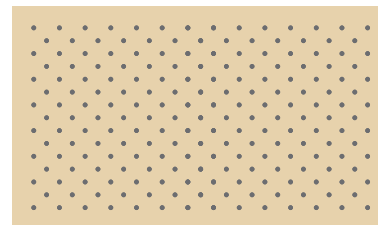
DFO

280 x 1200 mm
280 x 1500 mm
280 x 1800 x 14 mm
280 x 2100 x 14 mm



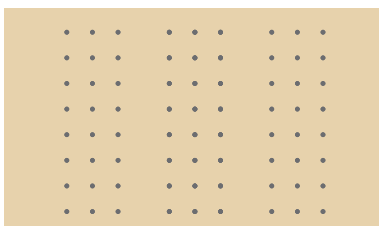
DF1

Ø 6	Ø 8		
2.49%	4.43%	280 x 1200 mm	● : 296
2.48%	4.40%	280 x 1500 mm	● : 368
2.47%	4.39%	280 x 1800 mm	● : 440
2.50%	4.44%	280 x 2100 mm	● : 520



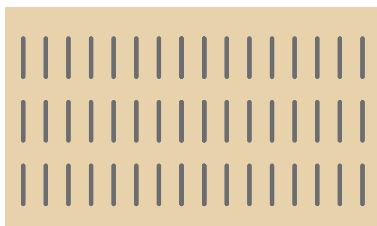
DF2

Ø 6	Ø 8		
4.61%	8.19%	280 x 1200 mm	● : 548
4.60%	8.17%	280 x 1500 mm	● : 683
4.63%	8.22%	280 x 1800 mm	● : 825
4.65%	8.27%	280 x 2100 mm	● : 968



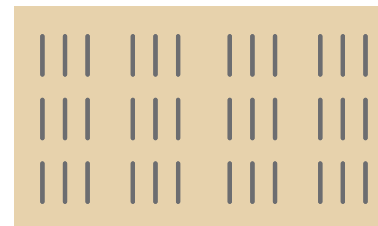
DF3

Ø 6	Ø 8		
1.82%	3.23%	280 x 1200 mm	● : 216
1.94%	3.45%	280 x 1500 mm	● : 288
1.88%	3.35%	280 x 1800 mm	● : 336
1.85%	3.28%	280 x 2100 mm	● : 384



CD1

6x66	8x66 mm		
12.83%	16.99%	280 x 1200 mm	■ : 111
12.76%	16.90%	280 x 1500 mm	■ : 138
12.71%	16.84%	280 x 1800 mm	■ : 165
12.88%	17.05%	280 x 2100 mm	■ : 195



CD2

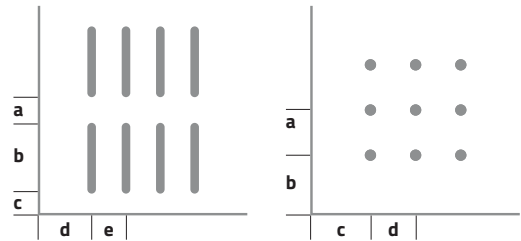
6x66	8x66 mm		
9.36%	12.40%	280 x 1200 mm	■ : 81
9.98%	13.22%	280 x 1500 mm	■ : 108
9.71%	12.86%	280 x 1800 mm	■ : 126
9.51%	12.59%	280 x 2100 mm	■ : 144



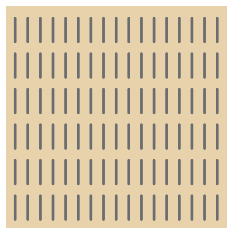
ACOUSTIC ABSORPTION PANELS

Giordano Institute n° 196088
197140 UNI EN ISO 354: 2003

— ceiling
— covering



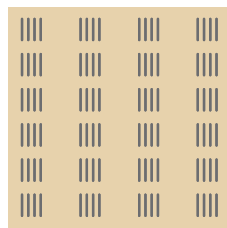
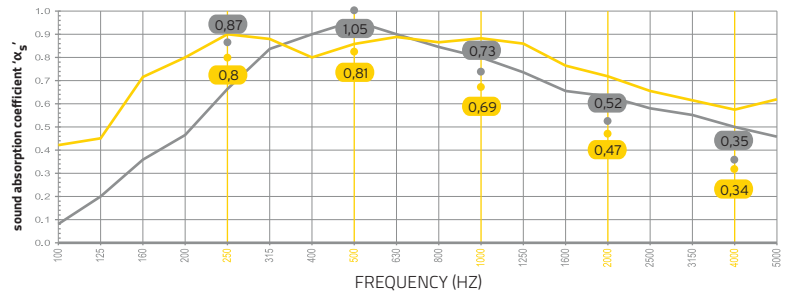
SLOTS



a = 32 mm
b = 58 mm
c = 46 mm
d = 44 mm
e = 32 mm

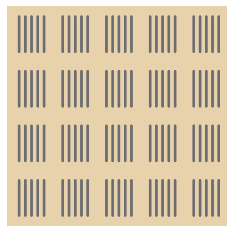
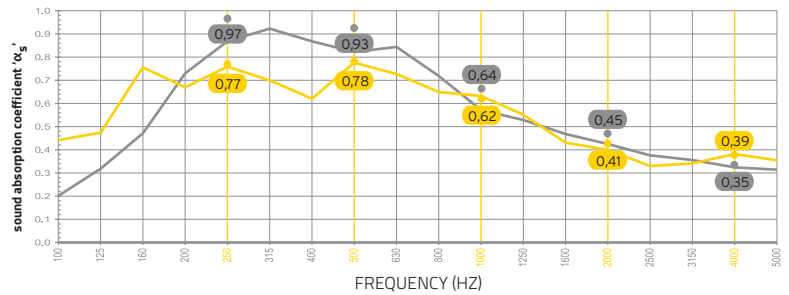
$\emptyset 6 = 1.07\%$
 $\emptyset 8 = 1.90\%$

α_p 0,87 | 1,05 | 0,73 | 0,52 | 0,35 | $\alpha_{w0} = 0,50$
0,8 | 0,81 | 0,69 | 0,47 | 0,34 | $\alpha_{w0} = 0,50$



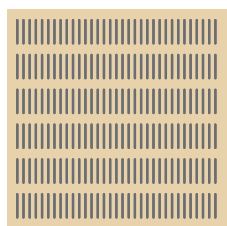
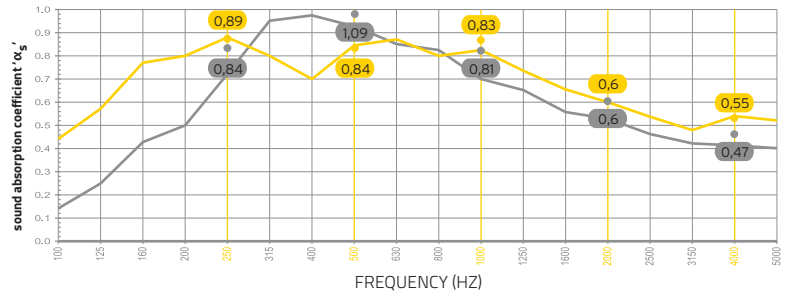
a = 38 mm
b = 52 mm
c = 49 mm
d = 51 mm
e = 16 mm

α_p 0,97 | 0,93 | 0,64 | 0,45 | 0,35 | $\alpha_{w0} = 0,50$
0,77 | 0,78 | 0,62 | 0,41 | 0,39 | $\alpha_{w0} = 0,45$



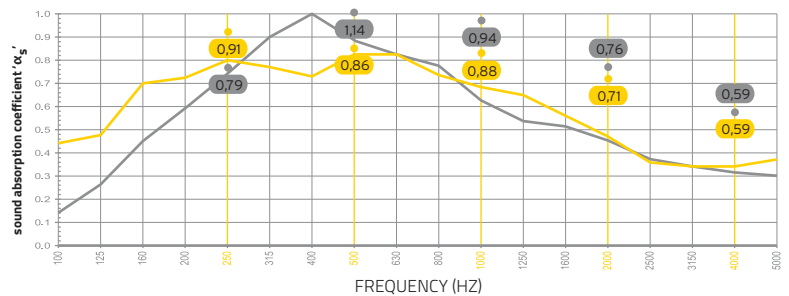
a = 52 mm
b = 88 mm
c = 46 mm
d = 44 mm
e = 16 mm

α_p 0,84 | 1,09 | 0,81 | 0,6 | 0,47 | $\alpha_{w0} = 0,60$
0,89 | 0,84 | 0,83 | 0,6 | 0,55 | $\alpha_{w0} = 0,50$



a = 32 mm
b = 58 mm
c = 46 mm
d = 44 mm
e = 16 mm

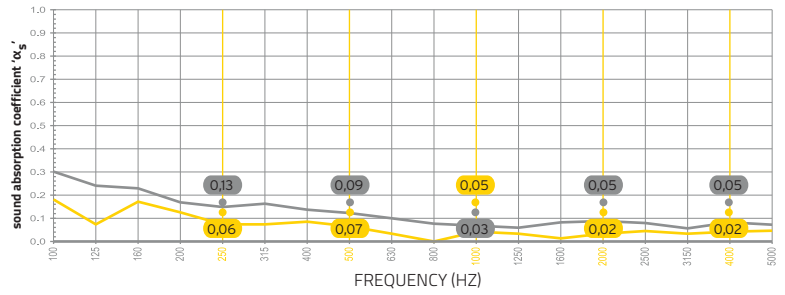
α_p 0,79 | 1,14 | 0,94 | 0,76 | 0,59 | $\alpha_{w0} = 0,75$
0,91 | 0,86 | 0,88 | 0,71 | 0,59 | $\alpha_{w0} = 0,75$



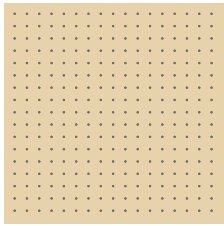
SMOOTH



α_p 0,13 | 0,09 | 0,03 | 0,05 | 0,05 | $\alpha_w = 0,10$
0,06 | 0,07 | 0,05 | 0,02 | 0,02 | $\alpha_w = 0,05$

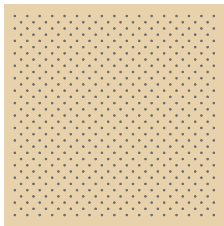
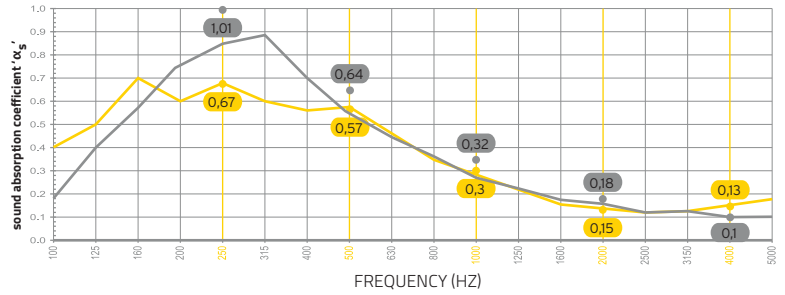


PERFORATION



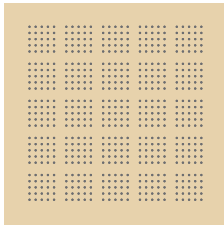
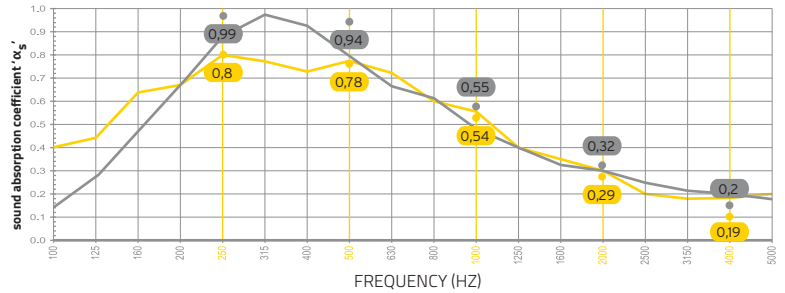
a = 32 mm
b = 44 mm
c = 44 mm
d = 32 mm

α_p 1,01 | 0,64 | 0,32 | 0,18 | 0,1 | $\alpha_w = 0,20$
0,67 | 0,57 | 0,3 | 0,15 | 0,13 | $\alpha_w = 0,25$



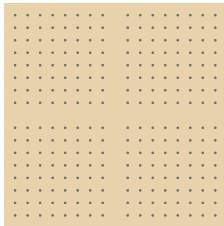
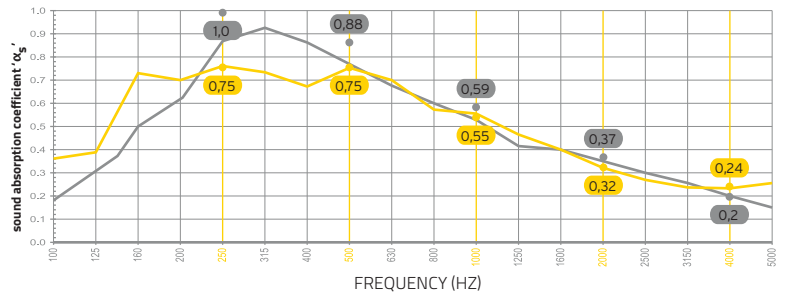
a = 16 mm
b = 44 mm
c = 44 mm
d = 16 mm

α_p 0,99 | 0,94 | 0,55 | 0,32 | 0,2 | $\alpha_w = 0,35$
0,8 | 0,78 | 0,54 | 0,29 | 0,19 | $\alpha_w = 0,35$



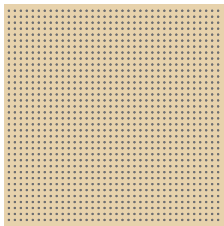
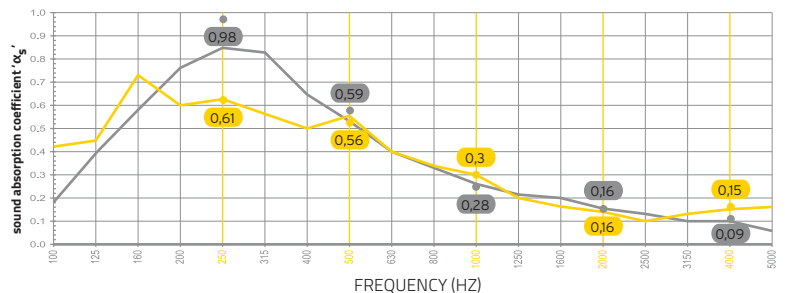
a = 16 mm
b = 76 mm
c = 76 mm
d = 16 mm

α_p 1 | 0,88 | 0,59 | 0,37 | 0,2 | $\alpha_w = 0,35$
0,75 | 0,75 | 0,55 | 0,32 | 0,24 | $\alpha_w = 0,35$



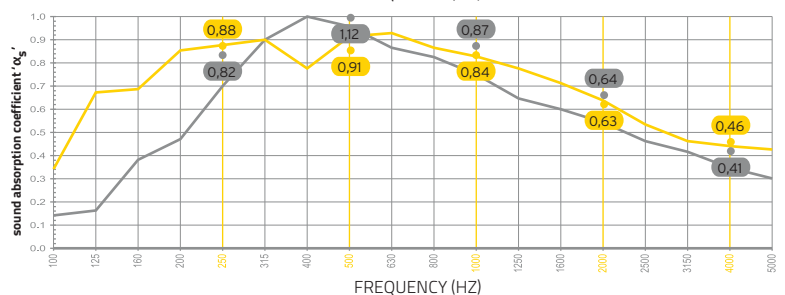
a = 32 mm
b = 44 mm
c = 44 mm
d = 32 mm

α_p 0,98 | 0,59 | 0,28 | 0,16 | 0,09 | $\alpha_w = 0,20$
0,61 | 0,56 | 0,3 | 0,16 | 0,15 | $\alpha_w = 0,25$



a = 16 mm
b = 17,5 mm
c = 17,5 mm
d = 16 mm

α_p 0,82 | 1,12 | 0,87 | 0,64 | 0,41 | $\alpha_w = 0,60$
0,88 | 0,91 | 0,84 | 0,63 | 0,46 | $\alpha_w = 0,65$



WOOD CEILINGS & COVERINGS: technical perfection, 100% made in Italy.

Modern, welcoming workplaces, free from noise pollution, where the warmth of natural wood is complemented by stylish, clean lines. Slats and panels set new standards in style for public offices and community spaces.

Modular elements standard or custom made, resistant, durable, easy to handle, simple and quick to install, inspected, certified, eco-friendly. They can be installed in any environment thanks to the architectural elements of great aesthetic versatility.



AESTETICH VERSATILITY



CONFIGURABILITY



HI-TECH PERFORMANCES

Why

- **MODERN AESTHETICS FOR ENVIRONMENTS WITH A WELCOMING AND NATURAL ATMOSPHERE.**
- **EXCLUSIVE IN-LINE ASSEMBLY STRUCTURE: SIMPLE, QUICK TO INSTALL, WITH CUSTOMIZABLE GAP ON REQUEST.**
- **SEISMIC SAFETY.**

Where

AUDITORIUMS, THEATRES, AIRPORTS, CONFERENCE ROOMS, OFFICES, PUBLIC SPACES AND ALL ENVIRONMENTS THAT REQUIRE SAFETY, EFFECTIVE NOISE CONTROL AND ELEGANT INTERIOR DESIGN.

Benefit

- **ACHIEVING FLEXIBLE, COMFORTABLE, CONTEMPORARY AND RESPONSIBLE INTERIORS.**
- **OBTAINING POINTS FOR LEED CERTIFICATION.**
- **SOUNDPROOFED ENVIRONMENTS.**
- **SPEEDING UP CONSTRUCTION.**
- **CONTAINING COSTS OF LABOUR AND MAINTENANCE.**
- **STRUCTURES 100% INSPECTABLE.**
- **INTEGRATION WITH ADVANCED CLIMATE CONTROL, DOMOTICS AND LIGHTING.**
- **PRECISE BUDGETING.**



FIRE REACTION

CBI Europe works hard to ensure the safety of the environments set up with its products. Research and tests allow us to obtain a constant evolution of quality. Certifications are provided on request.



FASTNESS

Our systems are designed to guarantee rapid installation, speeding up the laying phases and respecting all the requirements of planarity and orthogonality.



ACOUSTIC ABSORPTION

All systems are designed to offer excellent sound absorption performance, specific to the type of environment, safety and aesthetic results. Certifications are provided on request.



LEED CERTIFICATION

All products are manufactured in certified and constantly monitored processes to guarantee the highest standards of quality and safety.



ANTI-SEISMIC

The systems guarantee the application of all good safety practices in the construction and development of dedicated projects. Upon request, they can be supplied with an anti-seismic reports, which indicate suitable bracing.



INTEGRATED ACCESSORIES

The system can be fitted with accessories such as lighting units, ventilation vents, smoke detectors, sprinklers and suspended signage.



RECOMMENDATIONS FOR INSTALLATION

Slight differences in colour and shade between one panel and another are due to natural variations in the wood veneers. To obtain the most pleasing aesthetic effect, we recommend that you lay the panels out before deciding on their final arrangement. It is also good idea to order an extra number of panels to allow for future replacements, since shades, colours and grain can vary from one batch to another. All 'CBI Sound Wood Panels' must only be installed in indoor environments when the building maintained at a constant temperature.

Wood System panels should be removed from their packaging in the place of installation 48 hours before installing the ceiling or wall, so that they can assume the humidity of the environment. We recommend switching on the air conditioning in the environment at least 24 hours before starting installation. The installation environment should have temperature no lower than 15° and a relative humidity between 35% and 55% before work starts.



HYGIENE AND MAINTENANCE

Wood System panels are easy to maintain and require no special maintenance. To clean, simply wipe with a dry cloth. Panels should not be exposed to direct sunlight: like all natural materials, wood tends to change colour when exposed to UV rays. The polyacrylate treatment of the panels tends to reduce this effect. Remember that water and humidity will damage the veneering.



CBI EUROPE Via Mons. A.O. Romero, 14 · 60027 Osimo (AN) Italy
T +39 071 71 08 688 · fax +39 071 71 08 63 · info@cbi-europe.com · www.cbi-europe.com

